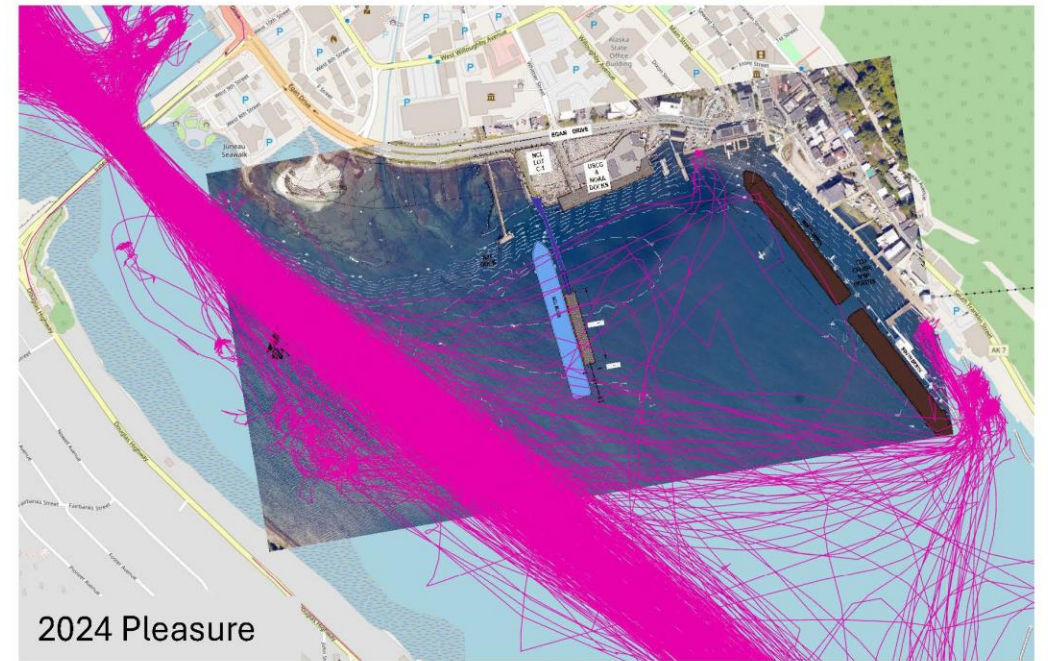
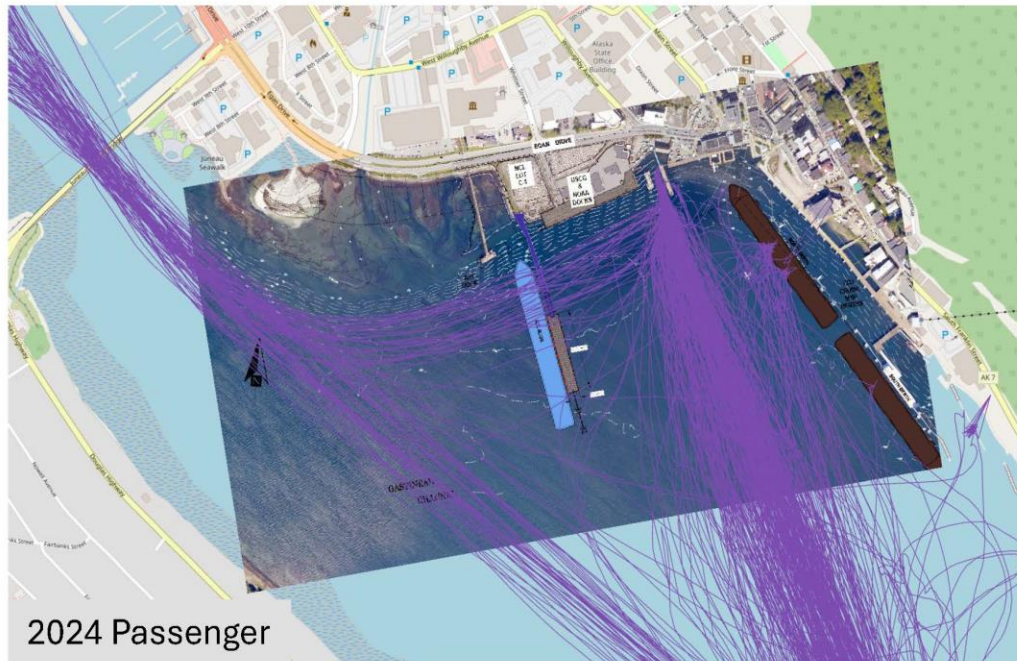
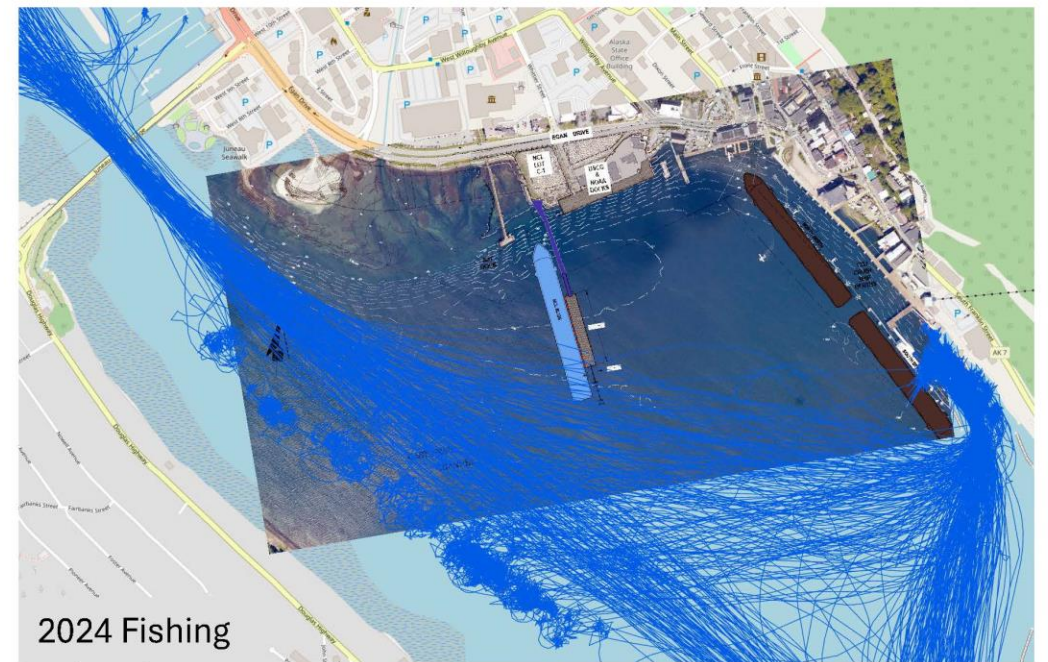
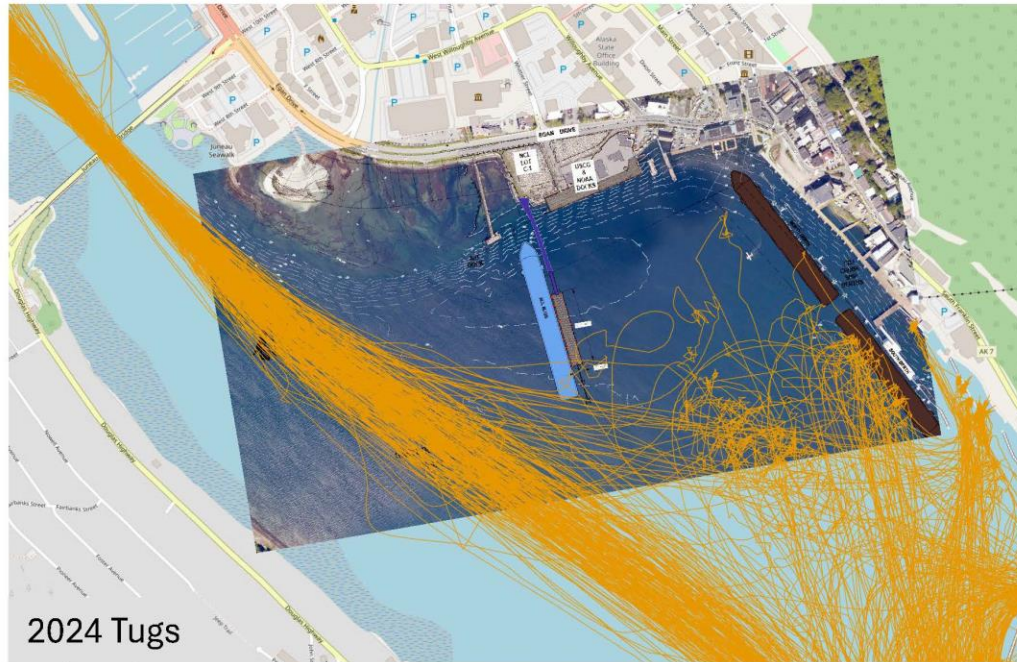


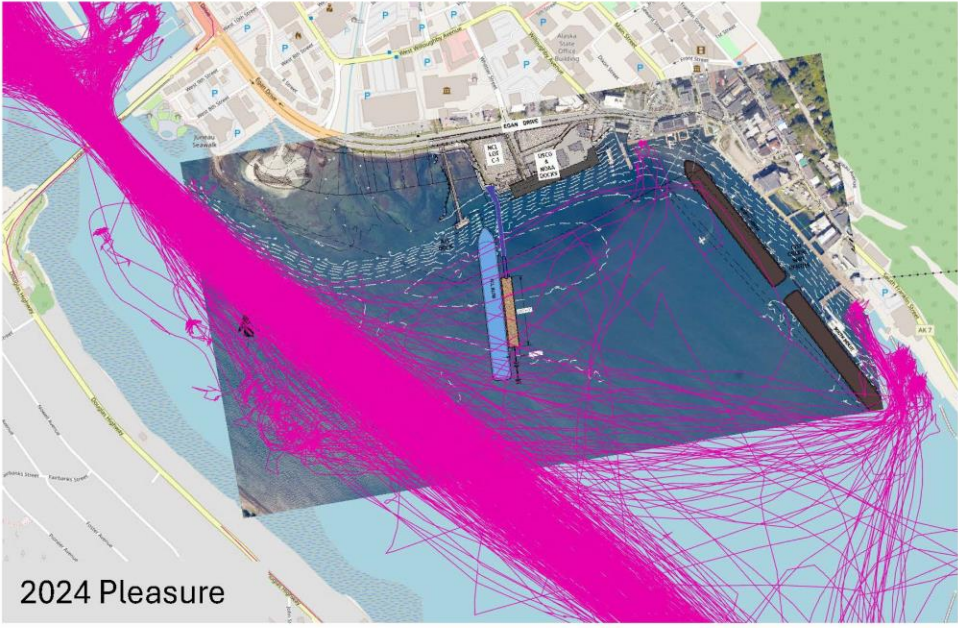
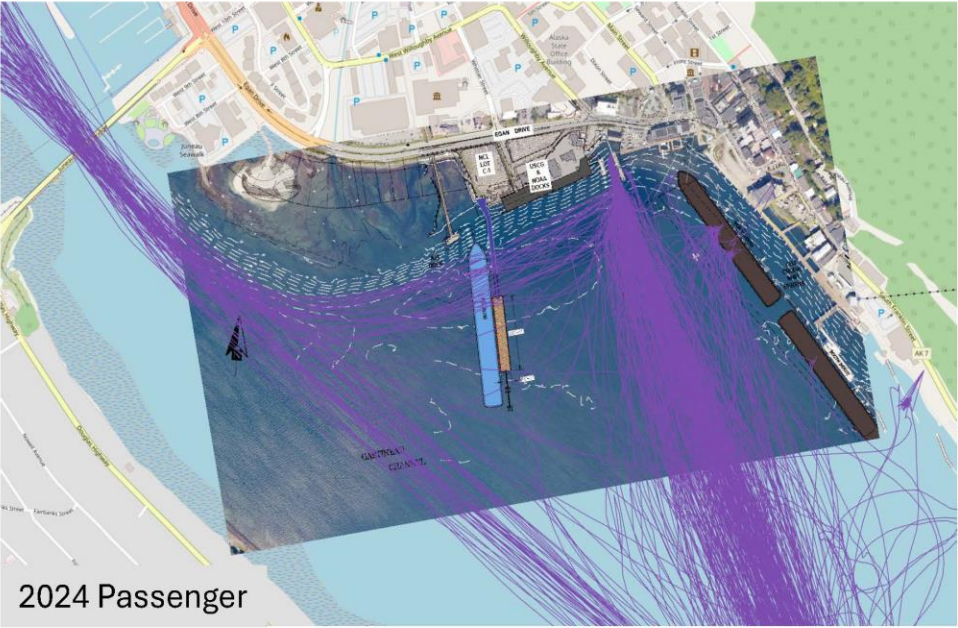
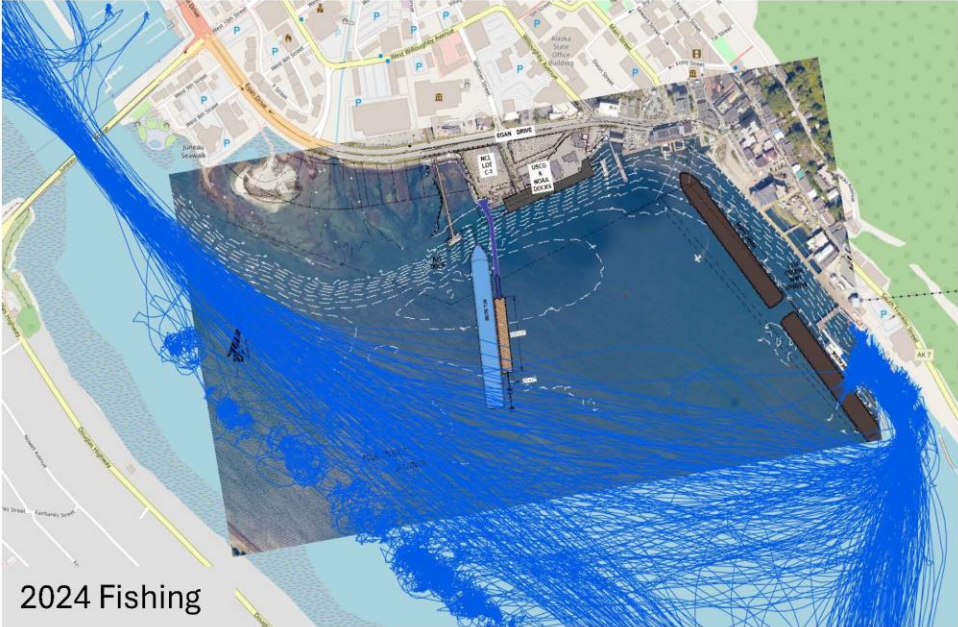
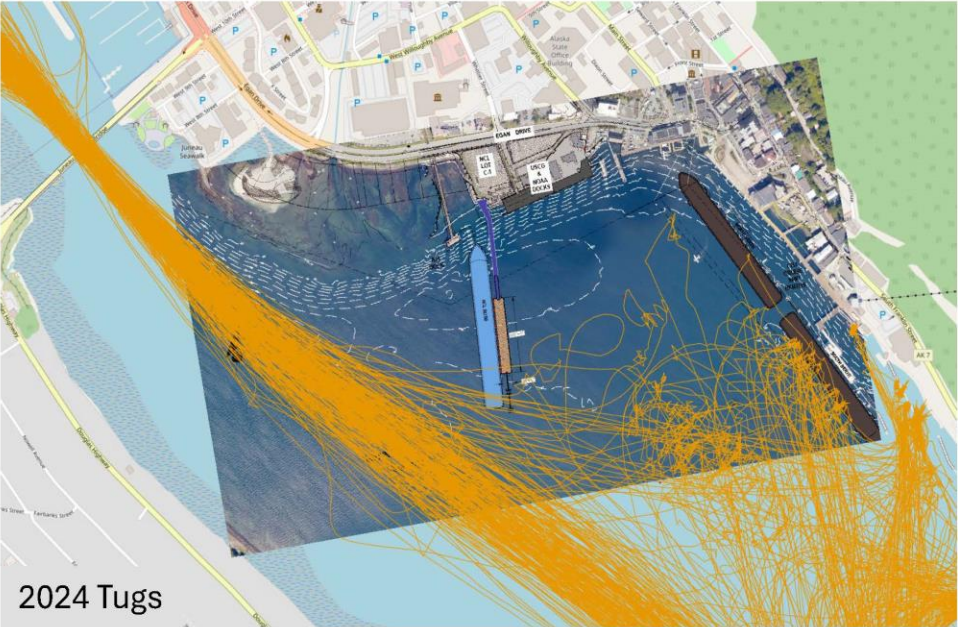
Dock Navigability Study



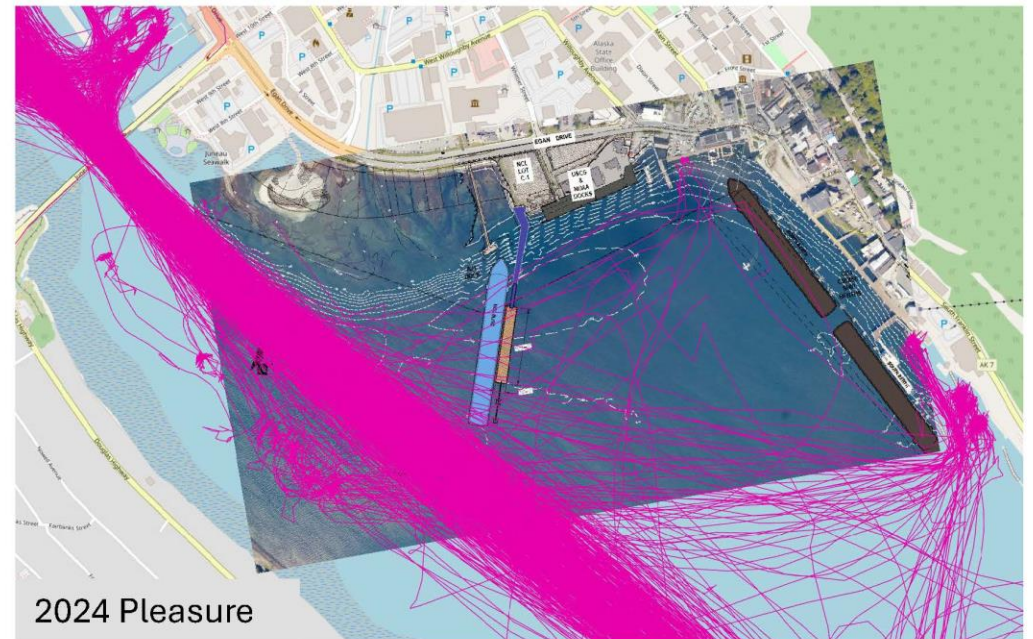
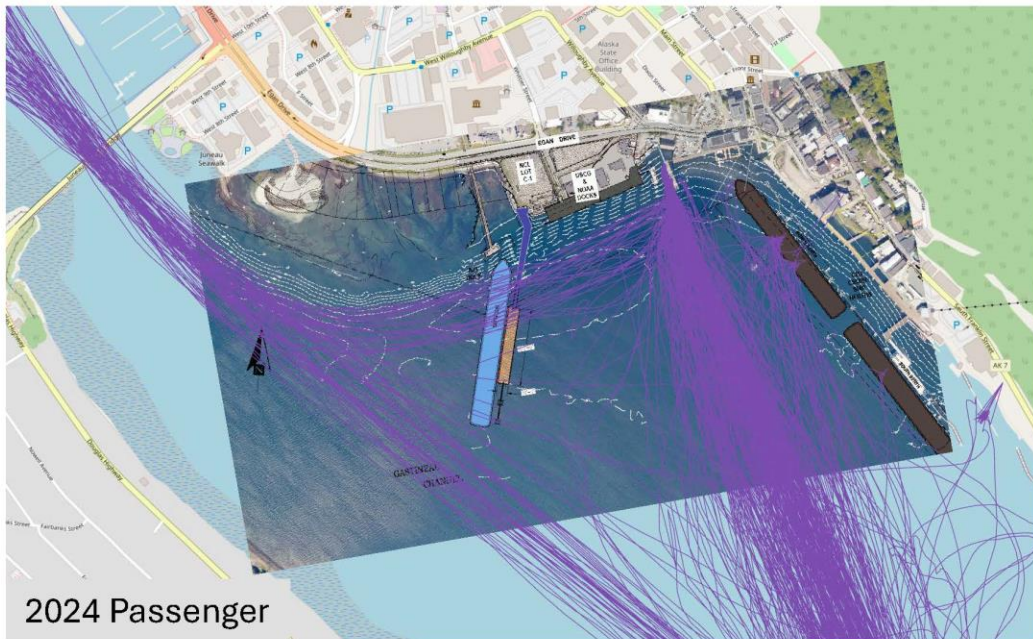
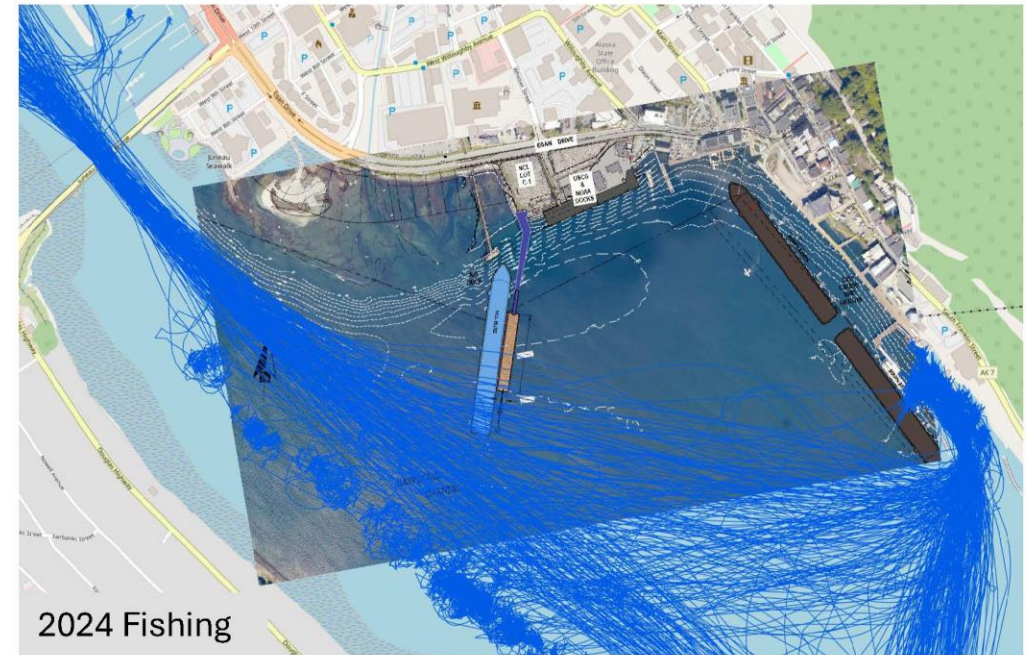
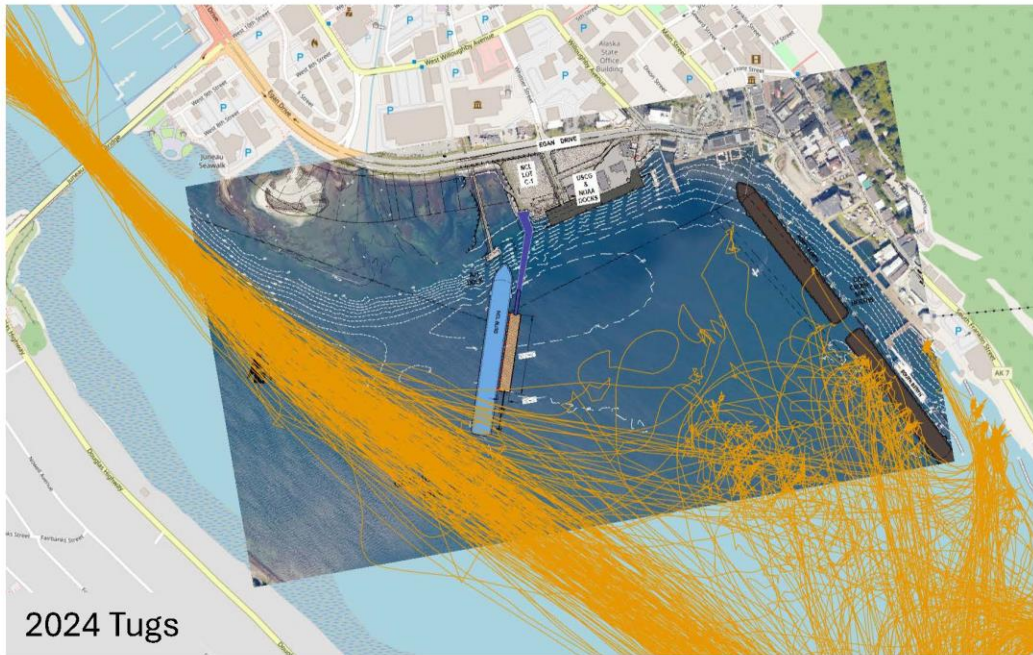
C1 Position and Bridge Traffic



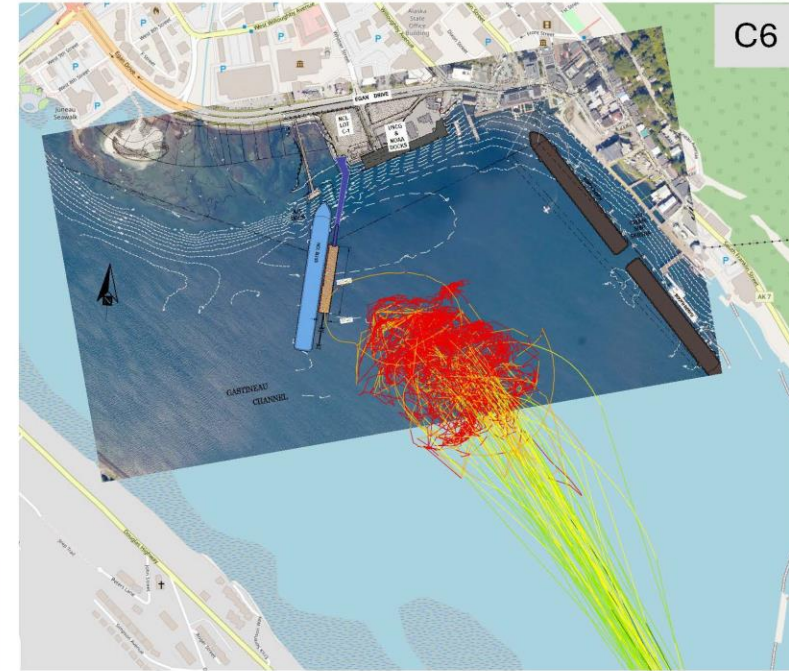
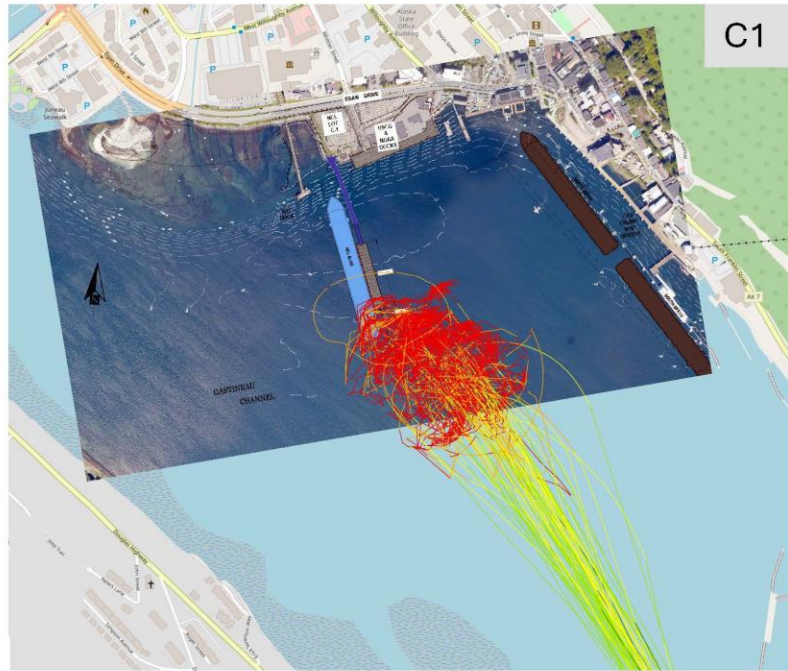
C3 Position and Bridge Traffic

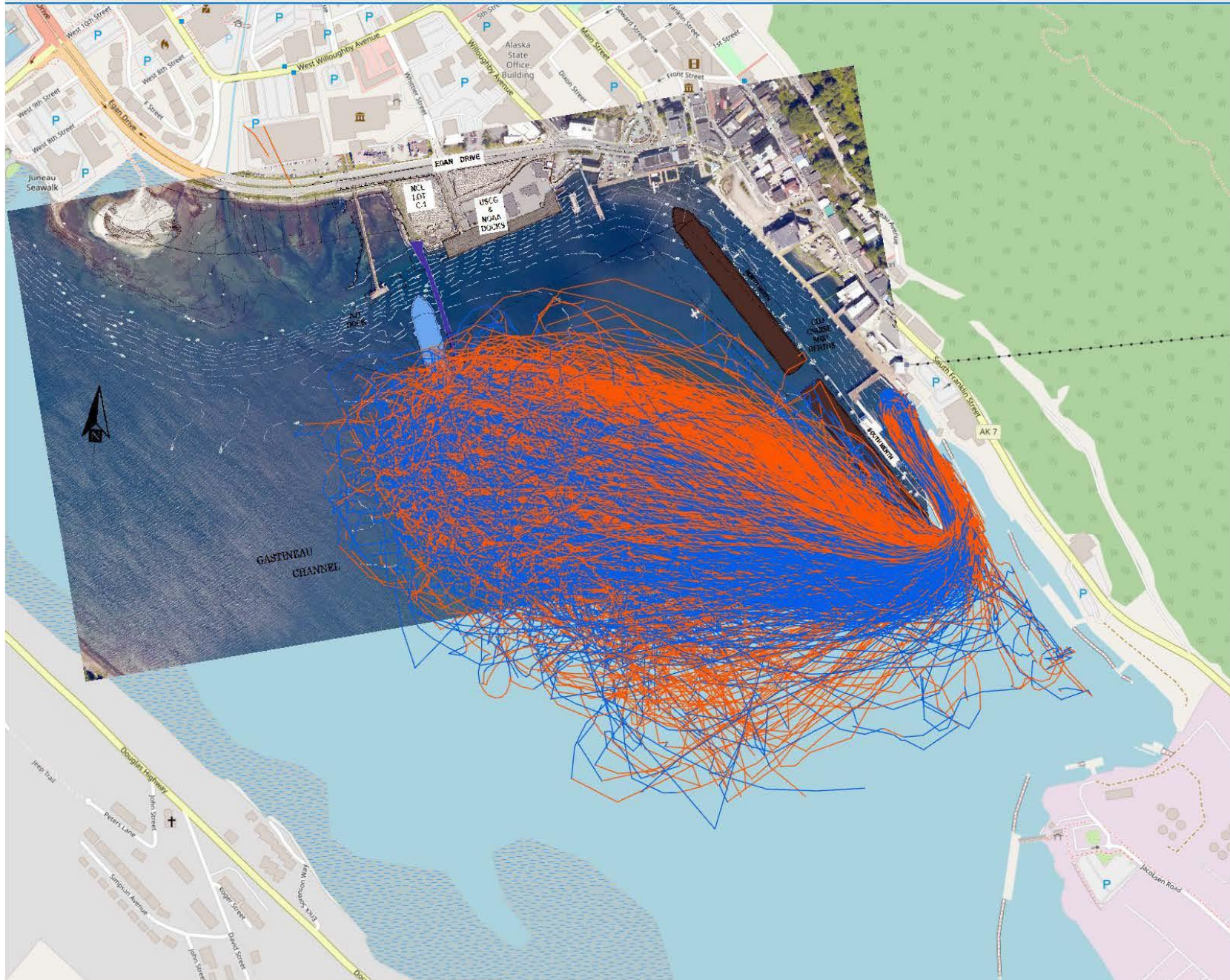


C6 Position and Bridge Traffic

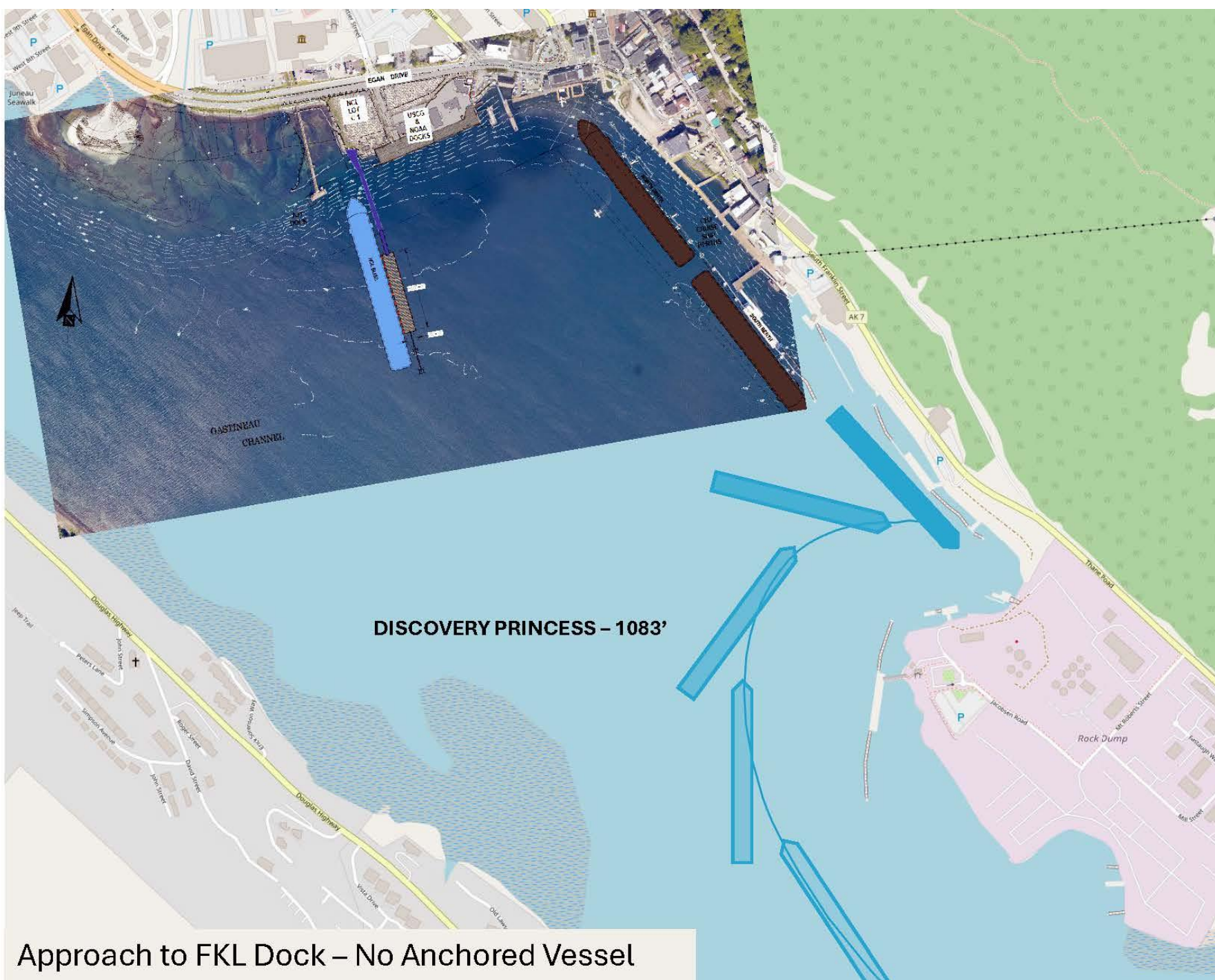


58 Days of Anchored Vessels



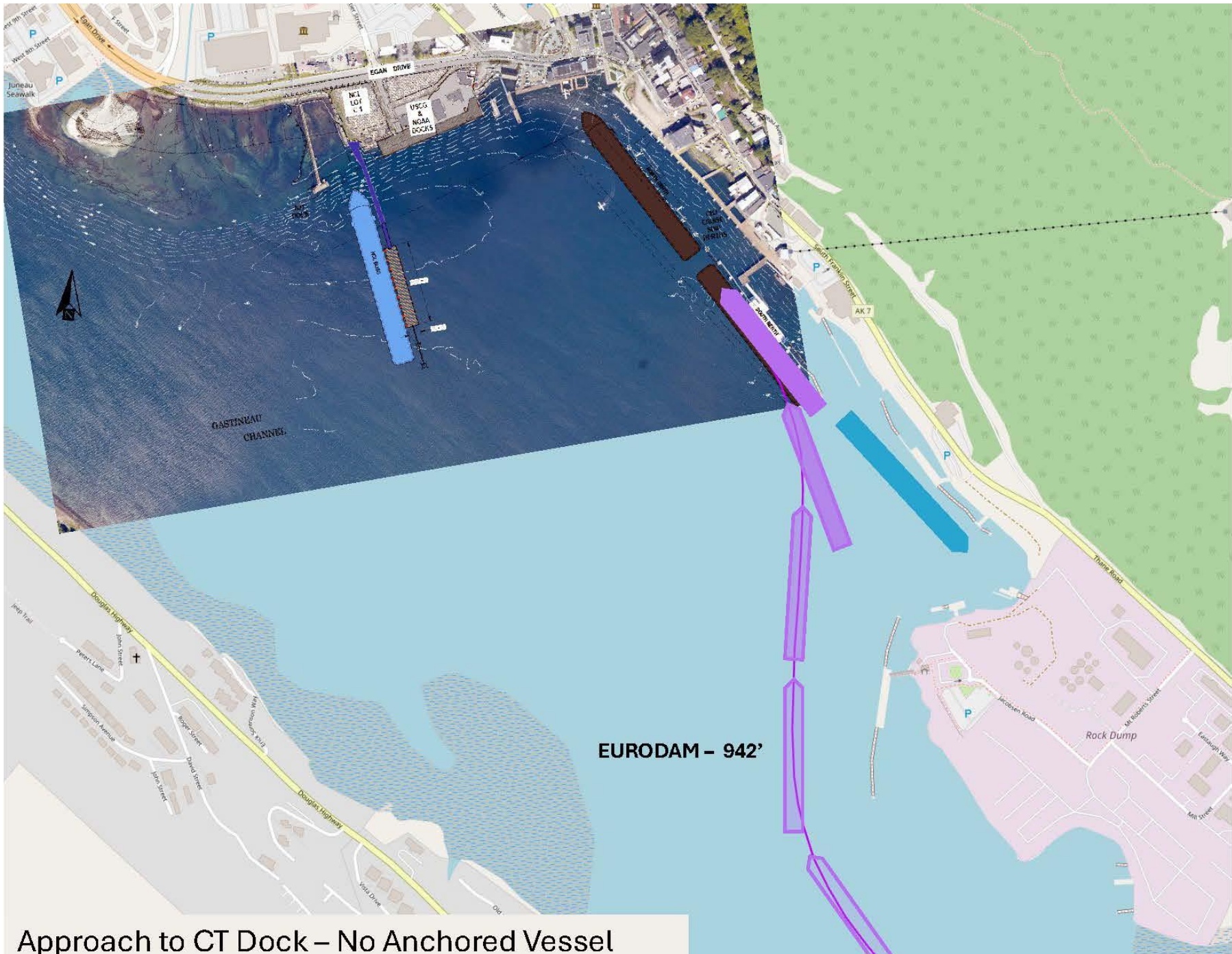


Anchored Ship Tender Activity
900+ Round-trips

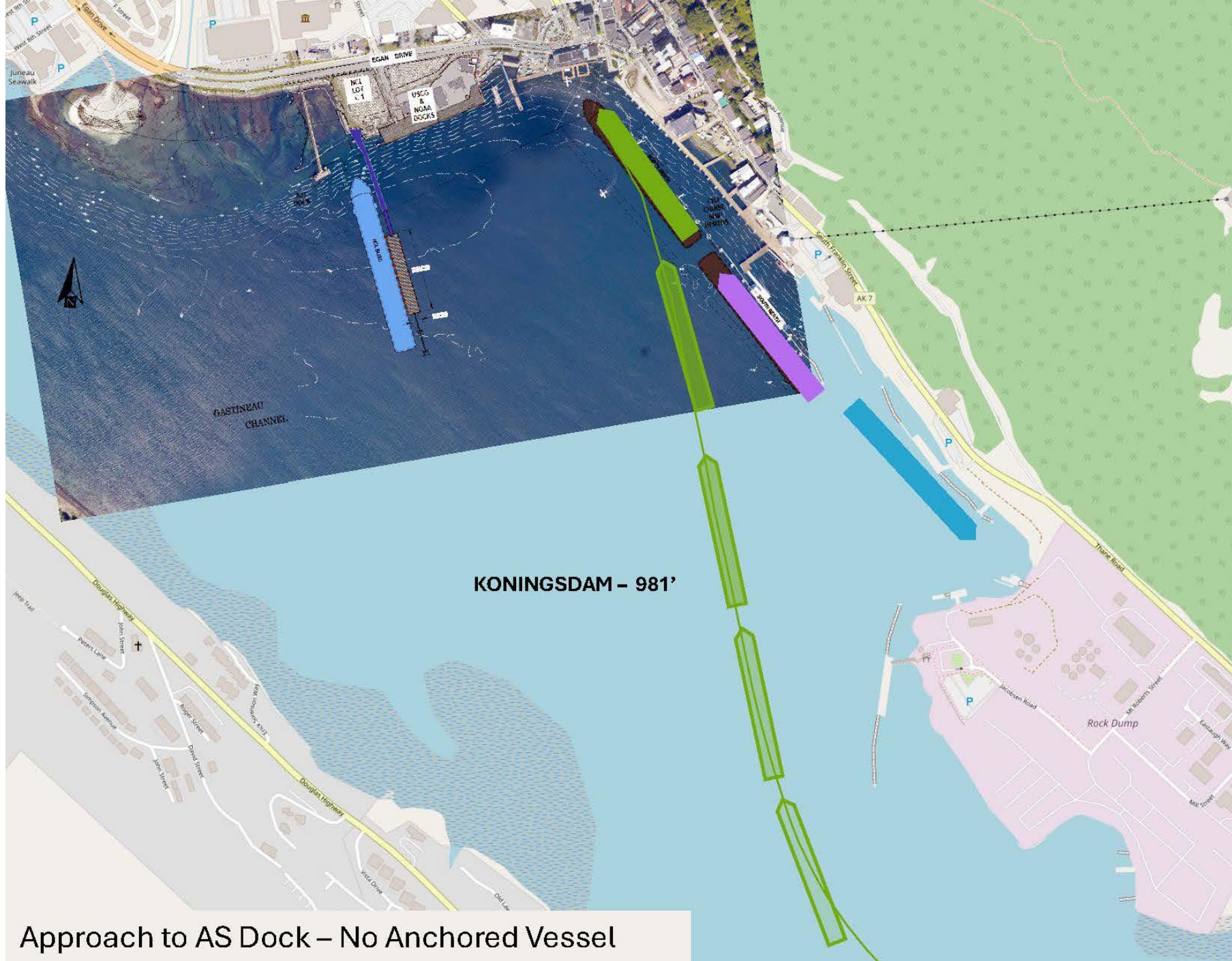


DISCOVERY PRINCESS – 1083'

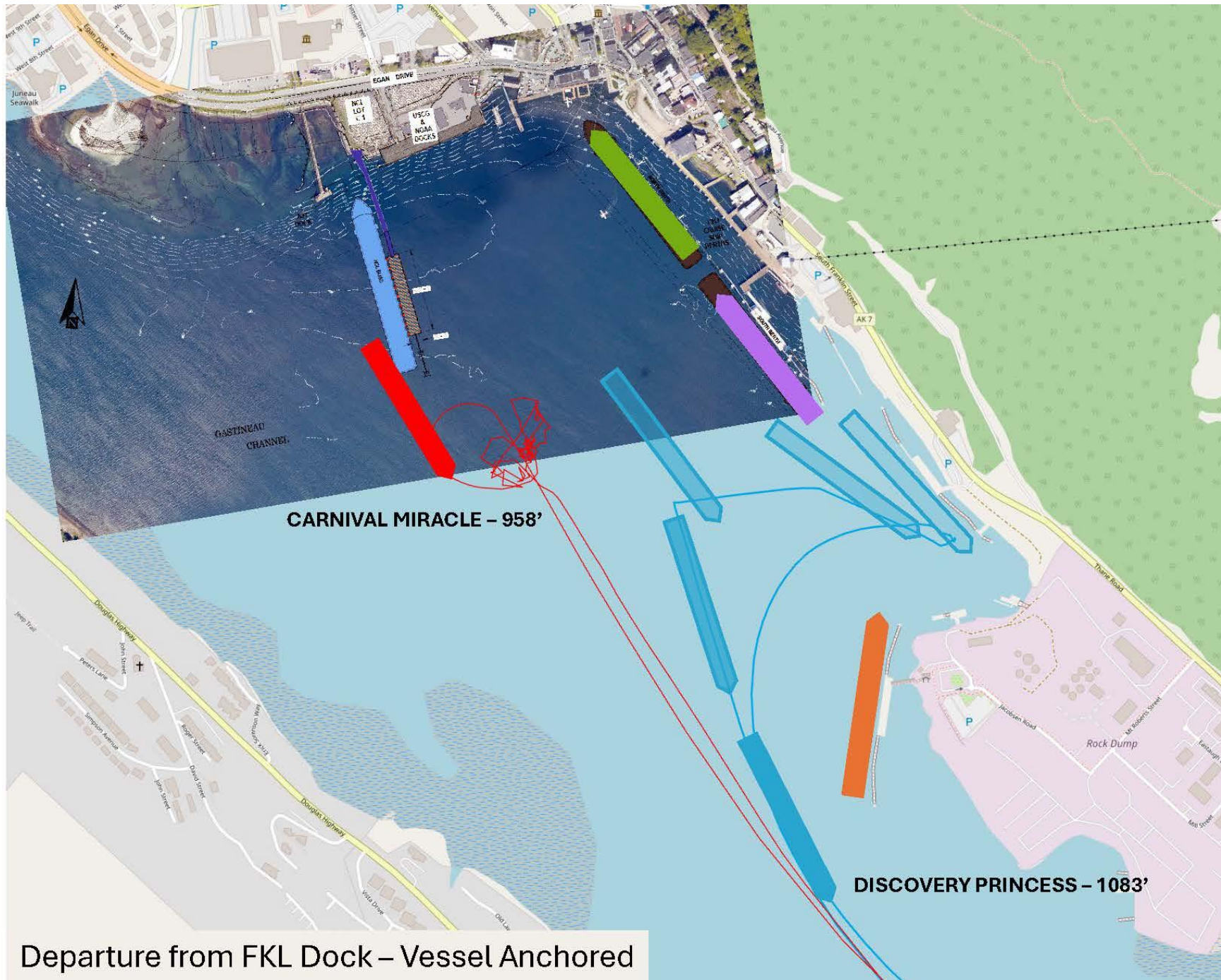
Approach to FKL Dock – No Anchored Vessel



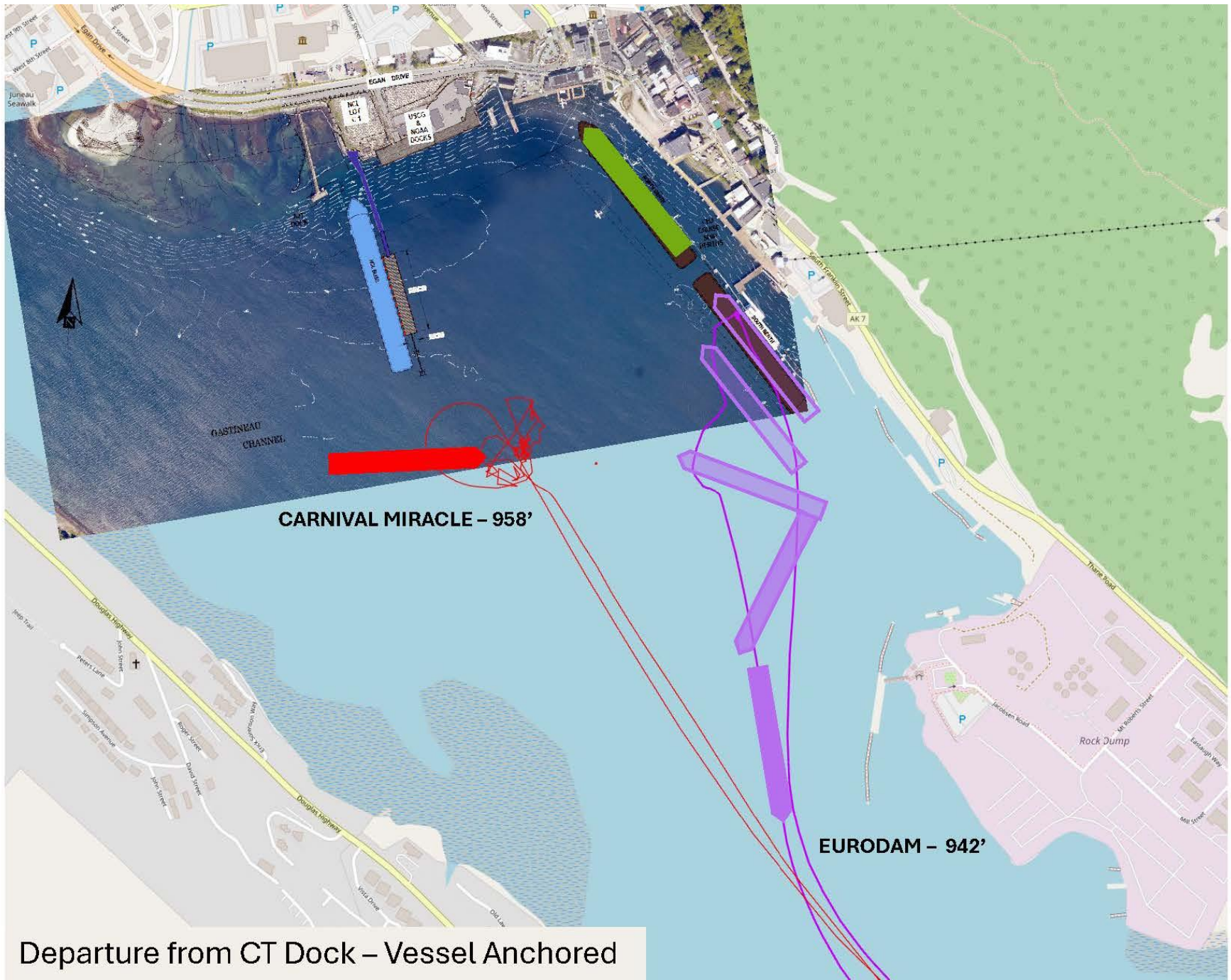
Approach to CT Dock – No Anchored Vessel



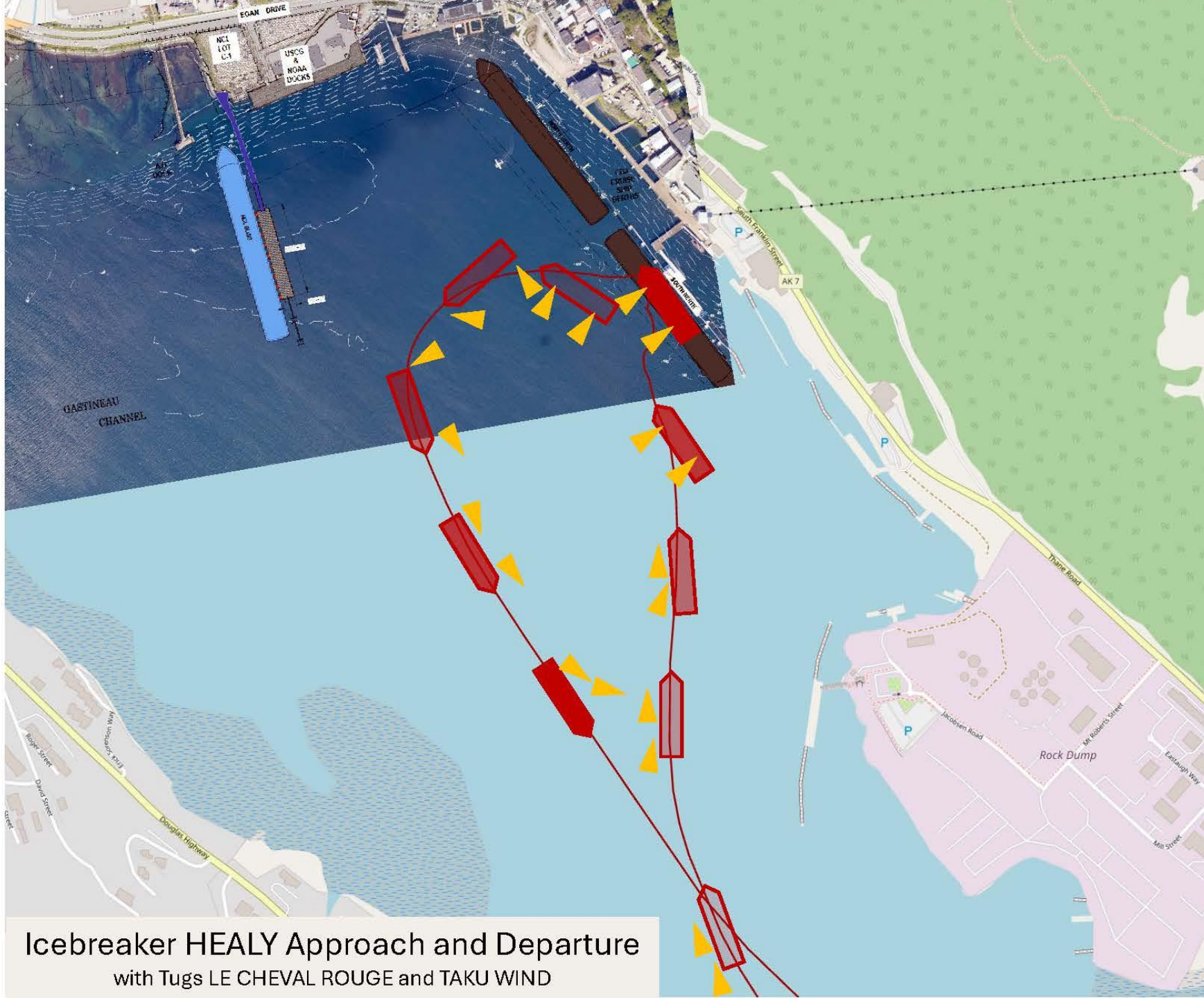
Approach to AS Dock – No Anchored Vessel



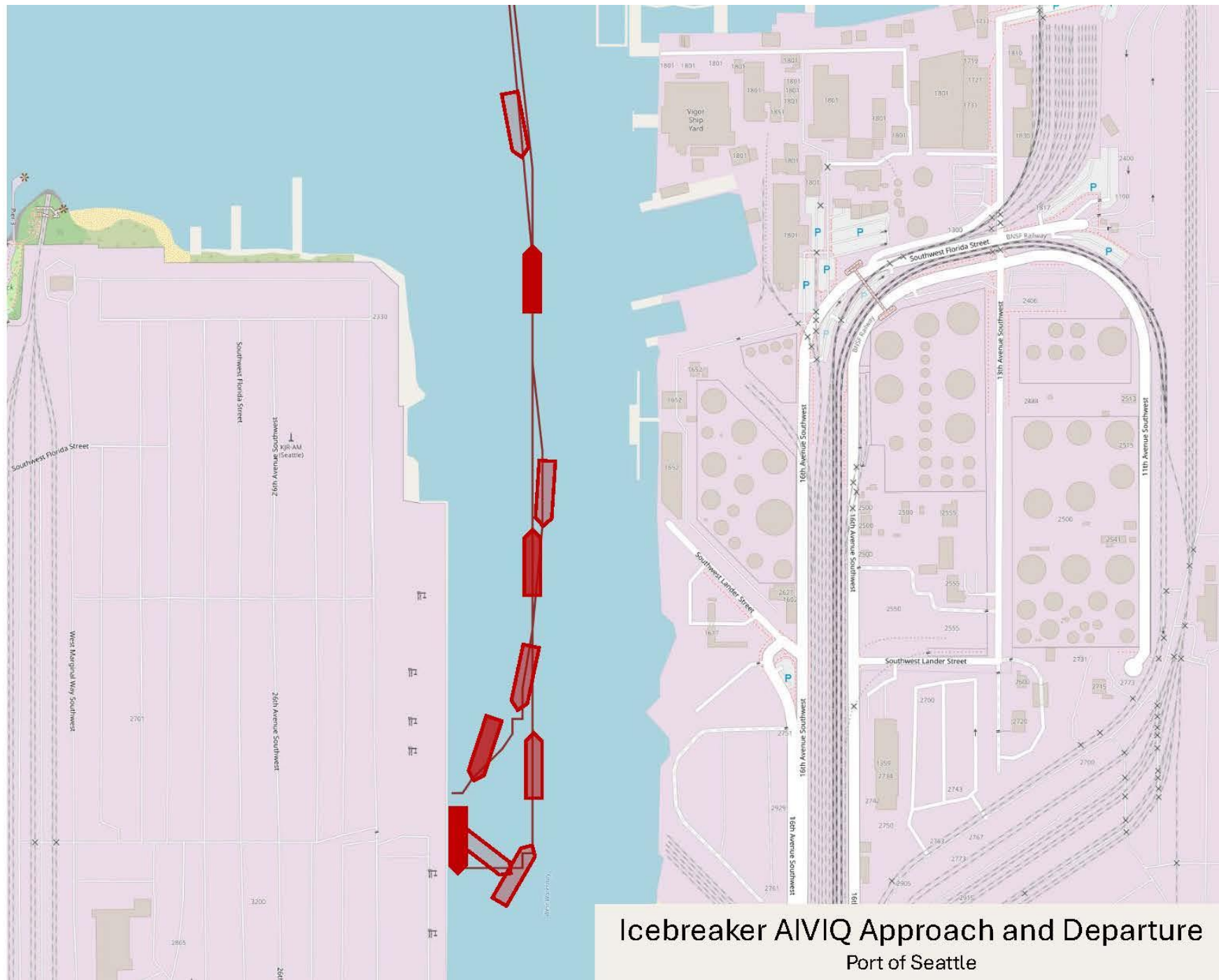
Departure from FKL Dock – Vessel Anchored



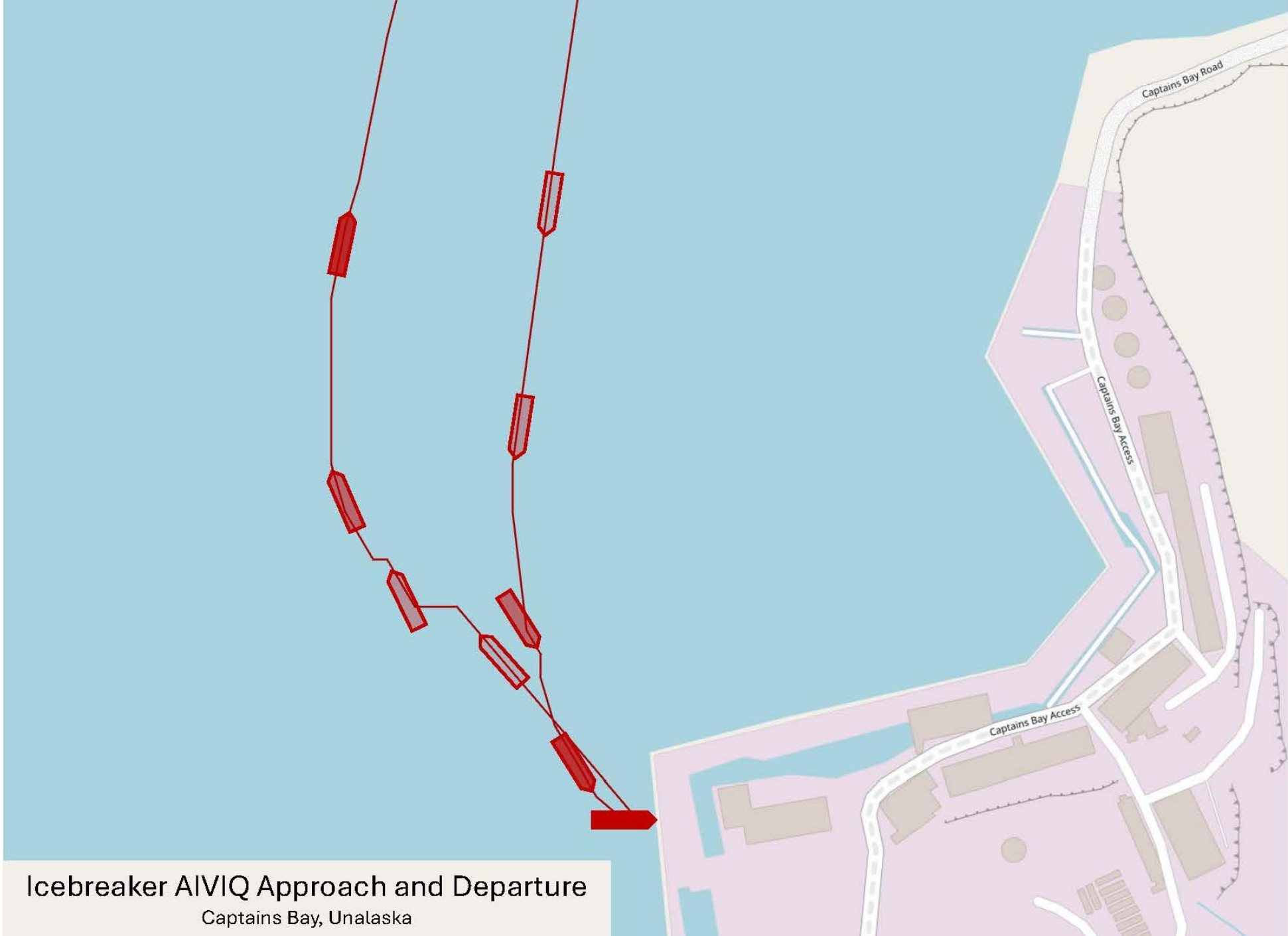
Departure from CT Dock – Vessel Anchored



Icebreaker HEALY Approach and Departure
with Tugs LE CHEVAL ROUGE and TAKU WIND



Icebreaker AIVIQ Approach and Departure
Port of Seattle



Icebreaker AIVIQ Approach and Departure
Captains Bay, Unalaska