

Áak'w Landing: A Vision for the Future

For the benefit of our people. For the benefit of all people.

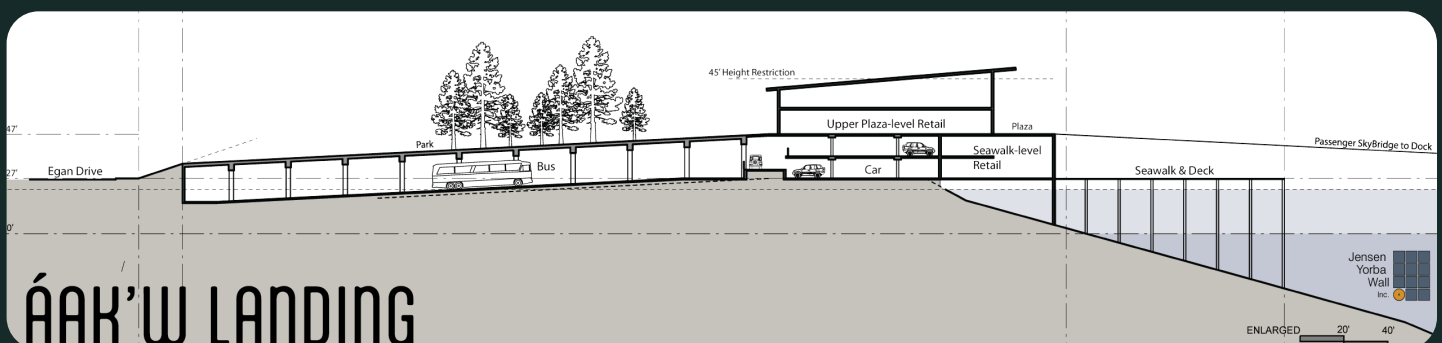
Áak'w Landing represents a transformative development for Juneau, offering significant cultural, economic, and environmental benefits.

Located at the subport, at Egan and Whittier, Áak'w Landing will feature:

- **New public park, event space, and seawalk extension**
- **Year-round waterfront dining, shopping, and events**
- **Indigenous knowledge, science, and cultural center** in collaboration with Sealaska Heritage Institute

The Huna Totem story is built around 10,000 years of resilience and adaptability. We believe in transforming challenges into opportunities for the benefit of our community and the world, guided by three pillars:

- **Culture-Driven**, ensuring we honor Alaska Native traditions and heritage as we facilitate cultural exchange
- **Community-Focused**, protecting and supporting our land through sustainable practices while showcasing authenticity and creating opportunity
- **Business-Centric**, prioritizing economic impact, fostering partnerships, and delivering community benefits with integrity





Why Aak'w Landing?

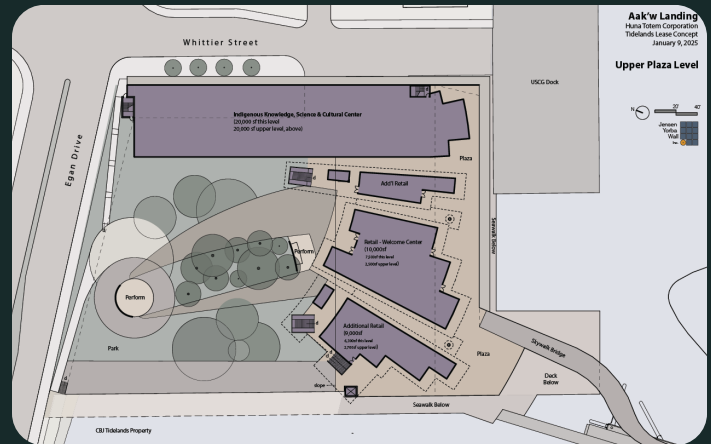
Huna Totem Corporation ensures every step aligns with our values and provides community benefit.

Visitors will enjoy easy access to shops and local businesses, boosting economic activity.

Residents gain year-round access to event spaces for community gatherings, festivals, and private receptions.

The collaborative and transparent process has been informed by:

- Planning Commission processes and conditions
- Visitor Industry Task Force recommendations
- CBJ input
- Annual resident surveys



Key Benefits

- Removes thousands of buses from congested downtown streets
- Adds 100+ covered parking spaces downtown
- Reduces emissions from cruise ships at anchor and lightering vessels
- Increases cruise ship use of shore power, in turn reducing resident's utility bills
- Supports Coast Guard and icebreaker operations
- Extends seawalk around development
- Attracts significant private investment
- Generates property and sales tax revenue for the community
- Creates 80+ construction jobs, 90+ summer jobs, and 20+ year-round jobs



Stay Informed of next steps as the Assembly considers a CBJ tidelands lease in the coming months. Learn more: scan the QR code or visit aakw-landing.com